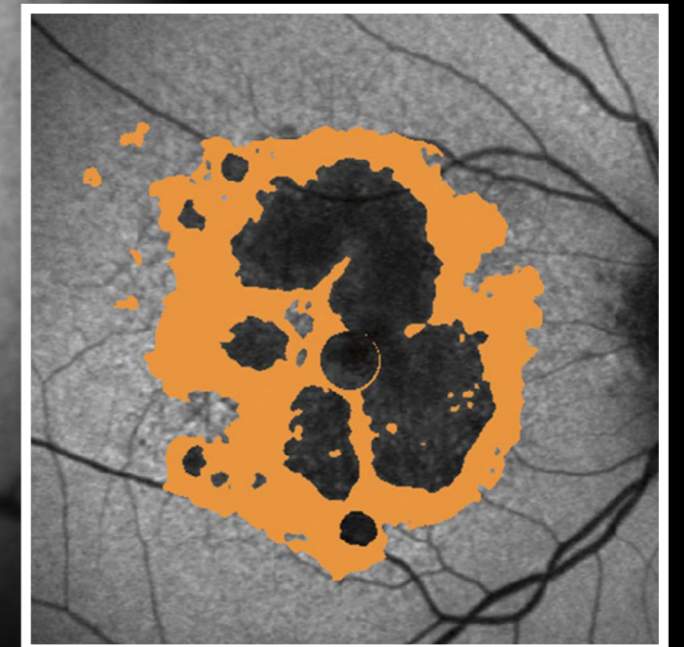
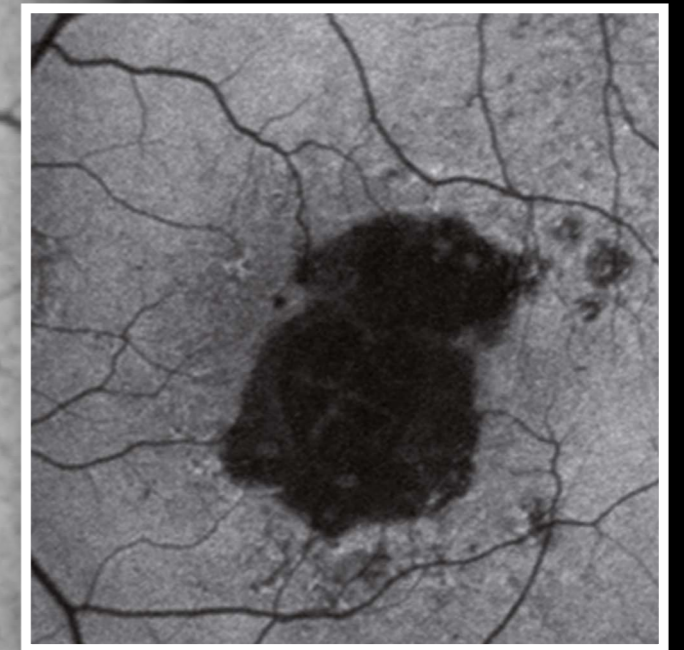
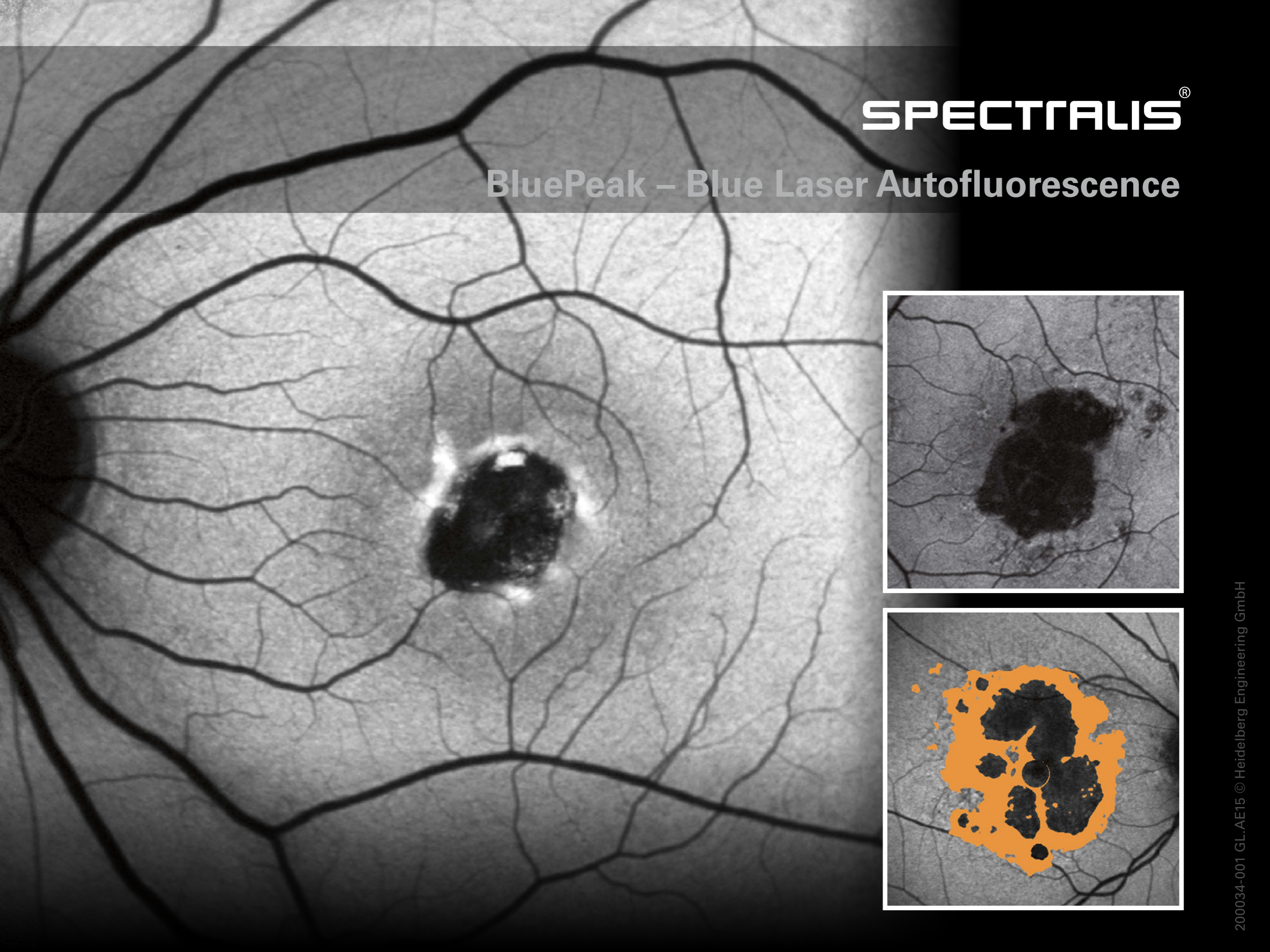


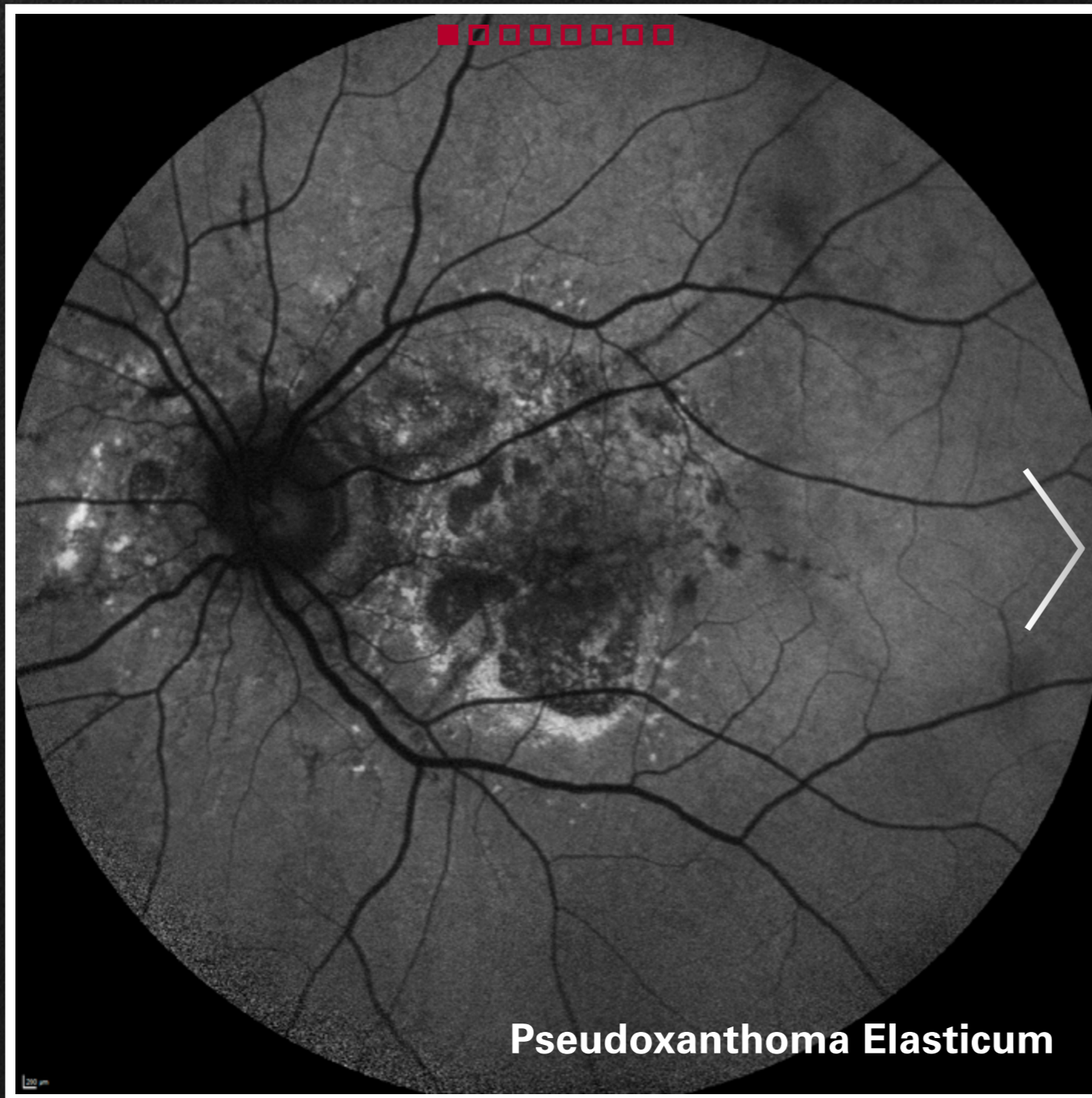
SPECTRALIS[®]

BluePeak – Blue Laser Autofluorescence





BluePeak – Blue Laser Autofluorescence



BluePeak is a non-invasive, scanning laser fundus imaging modality that provides a map of the retina which can reveal metabolic malfunction of diagnostic significance in many conditions such as AMD.

Diagnostic Images

Healthy Subject

Geographic Atrophy

Macular Dystrophy

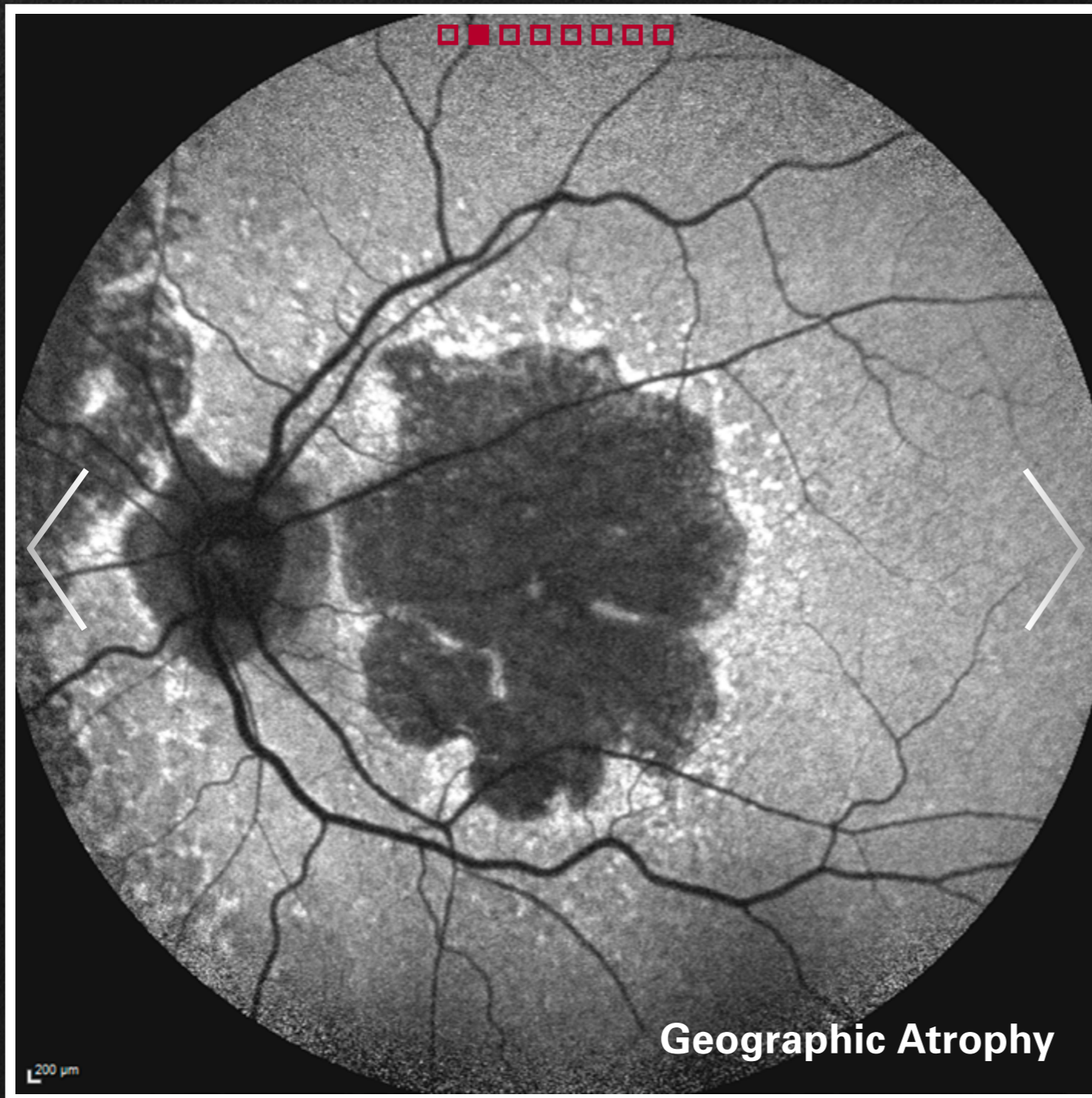
Videos

Pseudoxanthoma Elasticum





BluePeak – Blue Laser Autofluorescence



BluePeak is a non-invasive, scanning laser fundus imaging modality that provides a map of the retina which can reveal metabolic malfunction of diagnostic significance in many conditions such as AMD.

Diagnostic Images

Healthy Subject

Geographic Atrophy

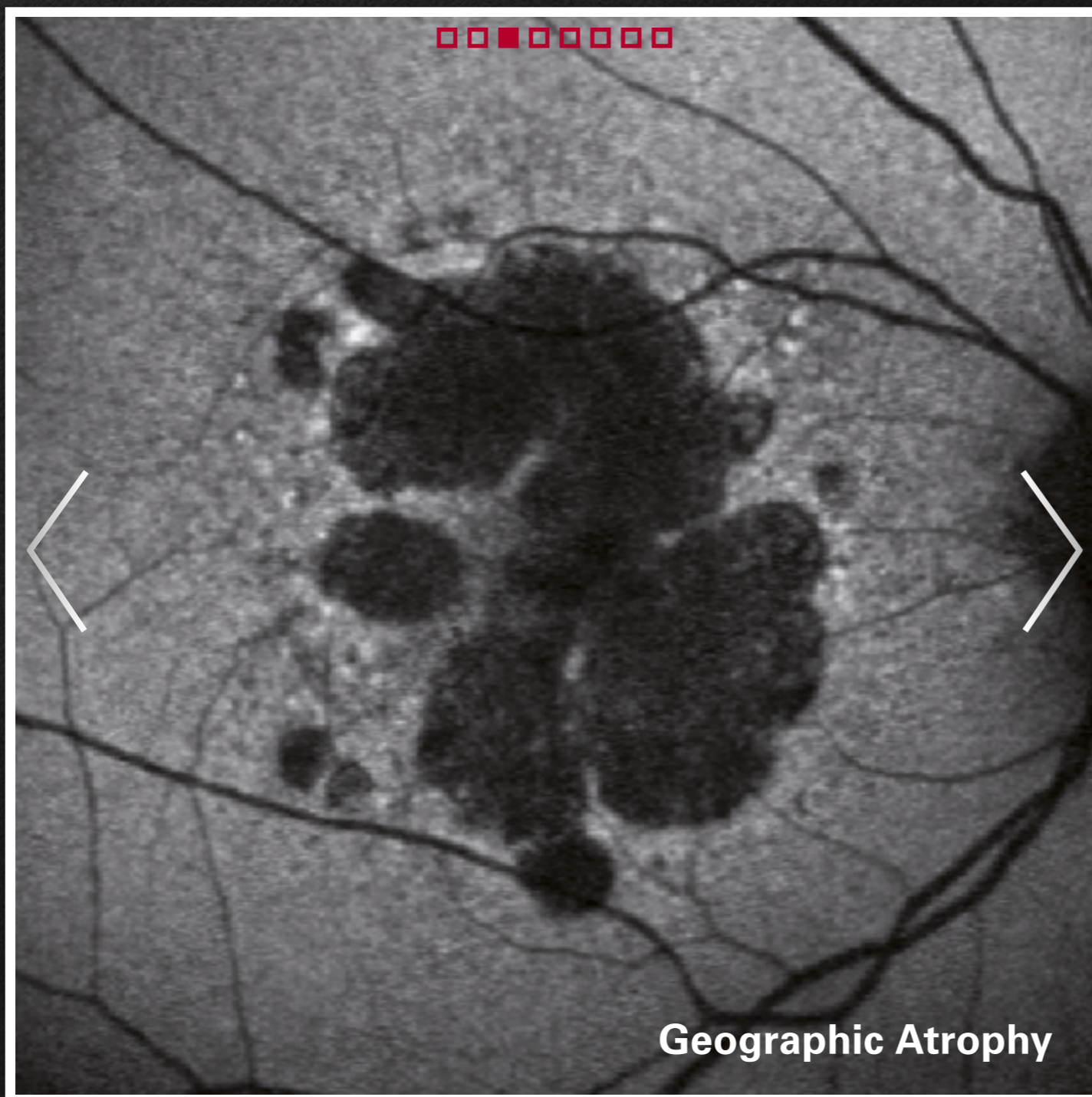
Macular Dystrophy

Videos





BluePeak – Blue Laser Autofluorescence



BluePeak is a non-invasive, scanning laser fundus imaging modality that provides a map of the retina which can reveal metabolic malfunction of diagnostic significance in many conditions such as AMD.

Diagnostic Images

Healthy Subject

Geographic Atrophy

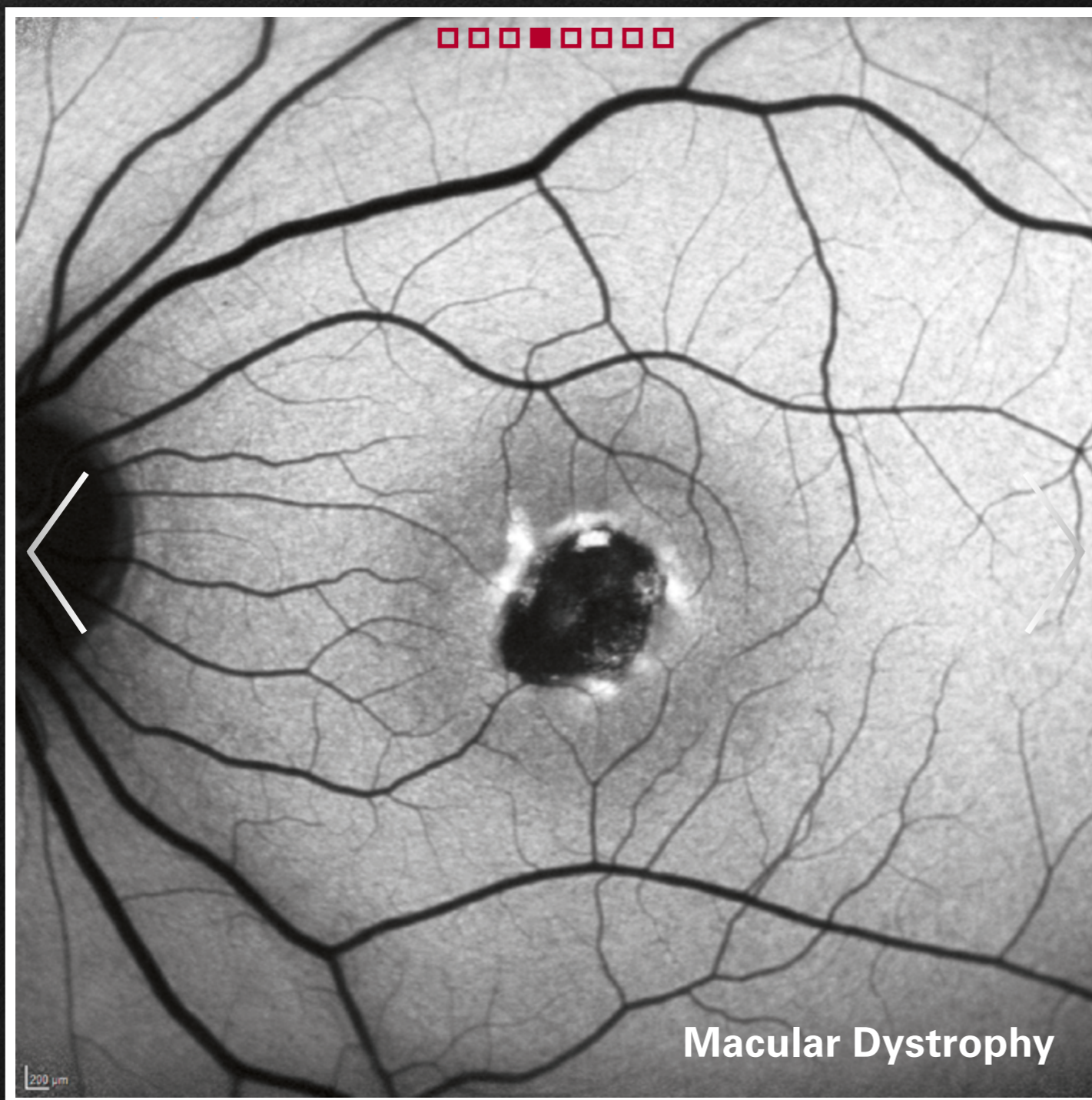
Macular Dystrophy

Videos





BluePeak – Blue Laser Autofluorescence



BluePeak is a non-invasive, scanning laser fundus imaging modality that provides a map of the retina which can reveal metabolic malfunction of diagnostic significance in many conditions such as AMD.

Diagnostic Images

Healthy Subject

Geographic Atrophy

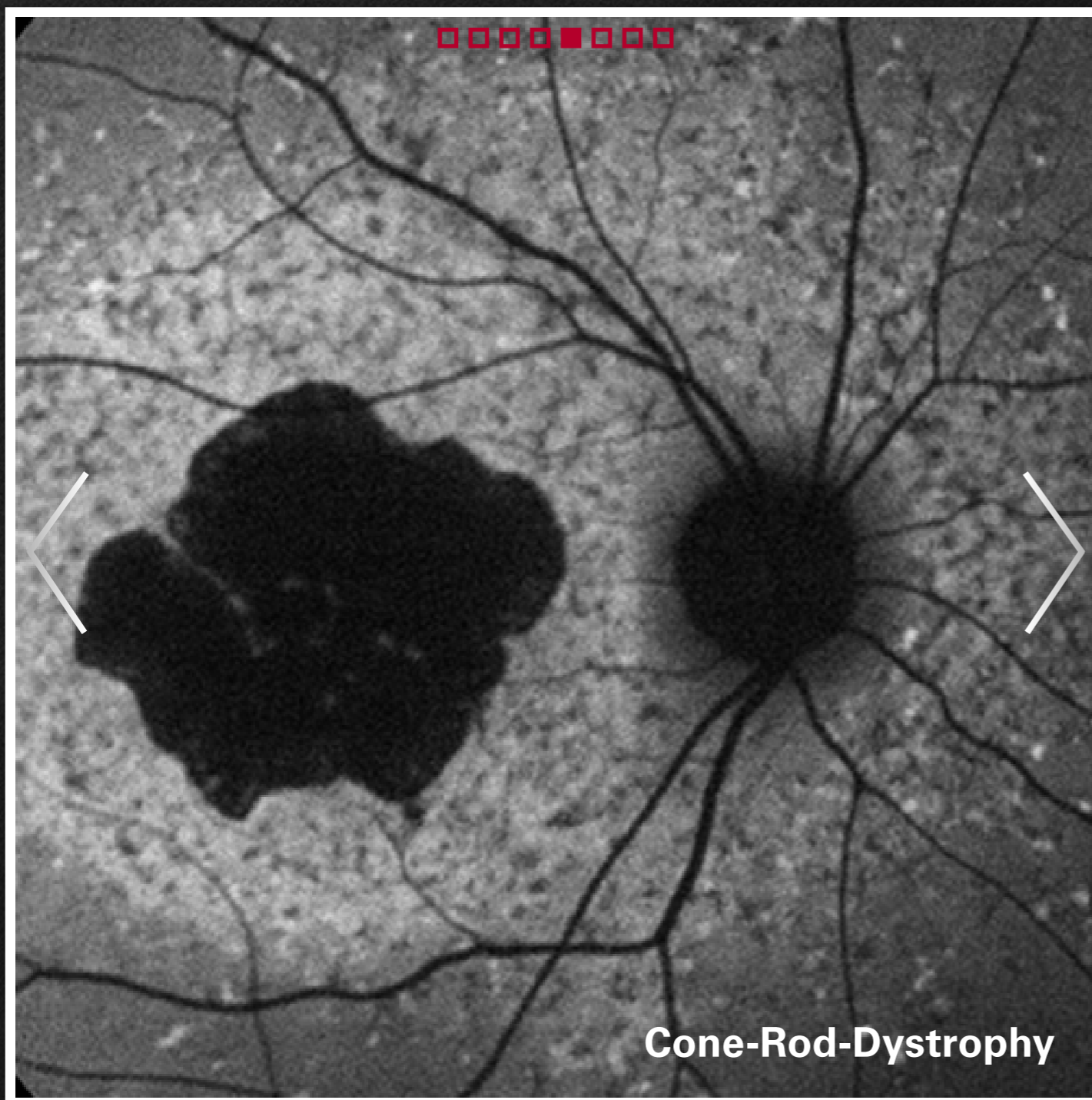
Macular Dystrophy

Videos





BluePeak – Blue Laser Autofluorescence



BluePeak is a non-invasive, scanning laser fundus imaging modality that provides a map of the retina which can reveal metabolic malfunction of diagnostic significance in many conditions such as AMD.

Diagnostic Images

Healthy Subject

Geographic Atrophy

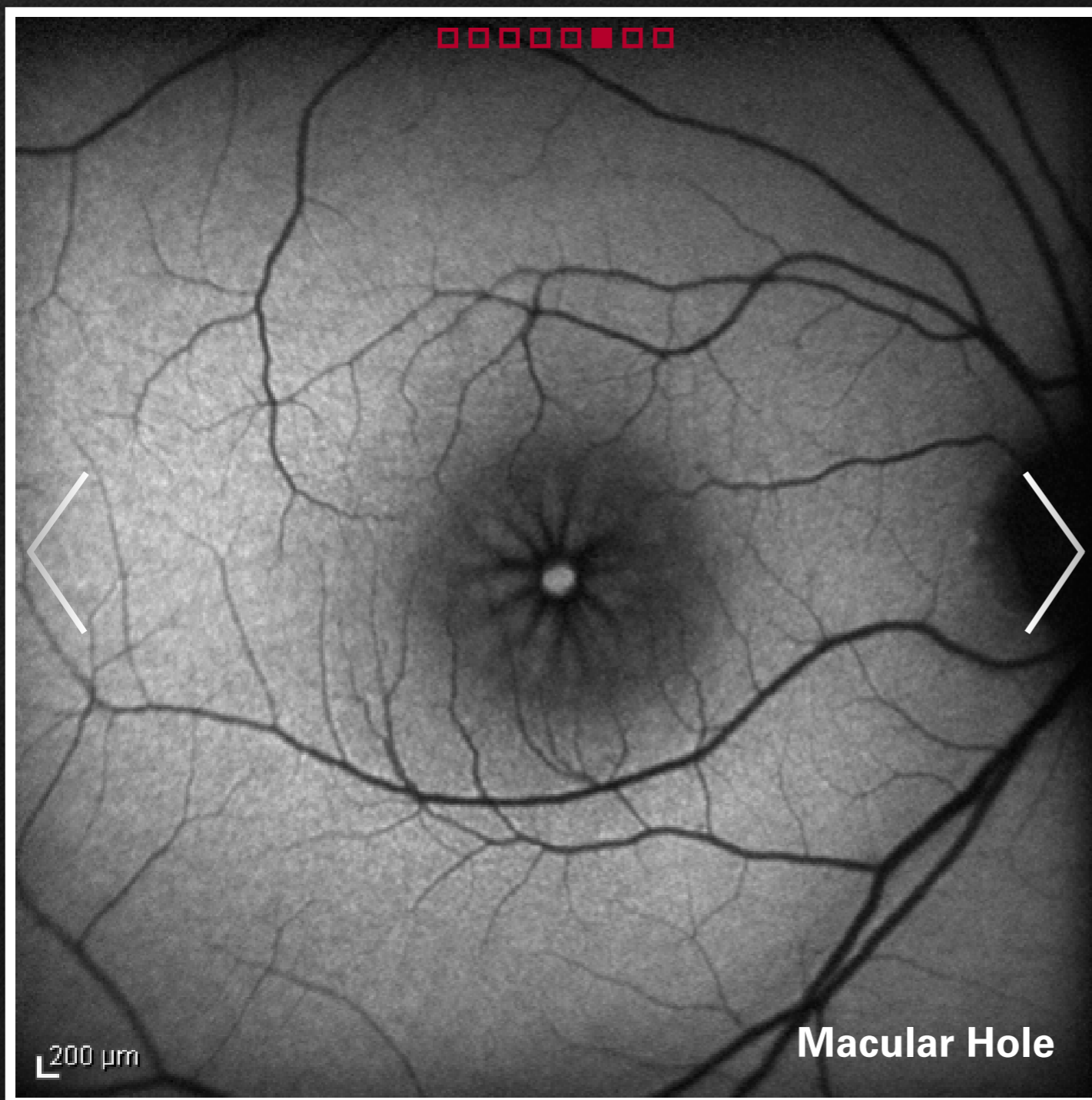
Macular Dystrophy

Videos





BluePeak – Blue Laser Autofluorescence



BluePeak is a non-invasive, scanning laser fundus imaging modality that provides a map of the retina which can reveal metabolic malfunction of diagnostic significance in many conditions such as AMD.

Diagnostic Images

Healthy Subject

Geographic Atrophy

Macular Dystrophy

Videos





BluePeak – Blue Laser Autofluorescence



BluePeak is a non-invasive, scanning laser fundus imaging modality that provides a map of the retina which can reveal metabolic malfunction of diagnostic significance in many conditions such as AMD.

Diagnostic Images

Healthy Subject

Geographic Atrophy

Macular Dystrophy

Videos





BluePeak – Blue Laser Autofluorescence



BluePeak is a non-invasive, scanning laser fundus imaging modality that provides a map of the retina which can reveal metabolic malfunction of diagnostic significance in many conditions such as AMD.

Diagnostic Images

Healthy Subject

Geographic Atrophy

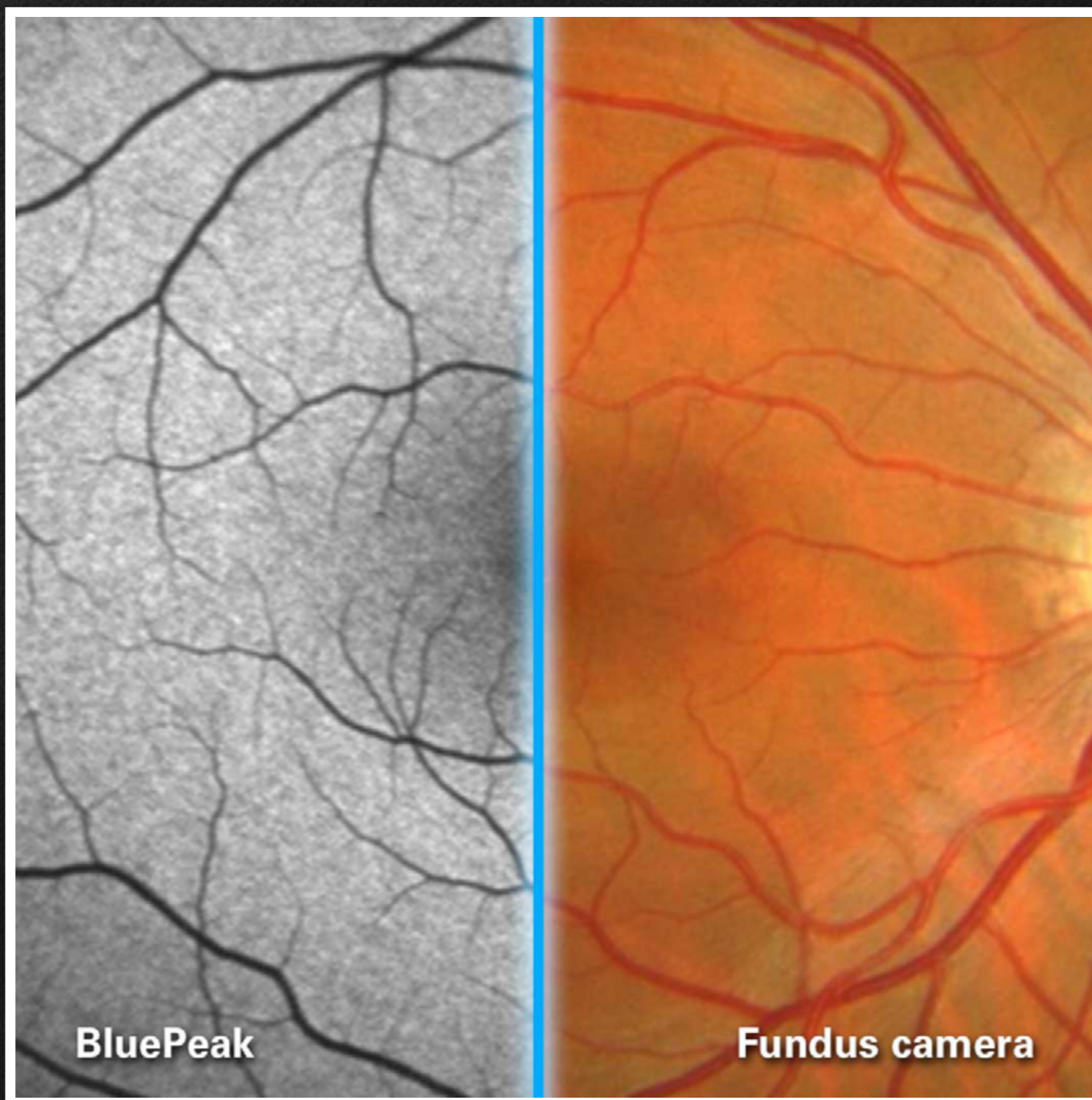
Macular Dystrophy

Videos





BluePeak – Blue Laser Autofluorescence



BluePeak is a non-invasive, scanning laser fundus imaging modality that provides a map of the retina which can reveal metabolic malfunction of diagnostic significance in many conditions such as AMD.

Diagnostic Images

Healthy Subject

Geographic Atrophy

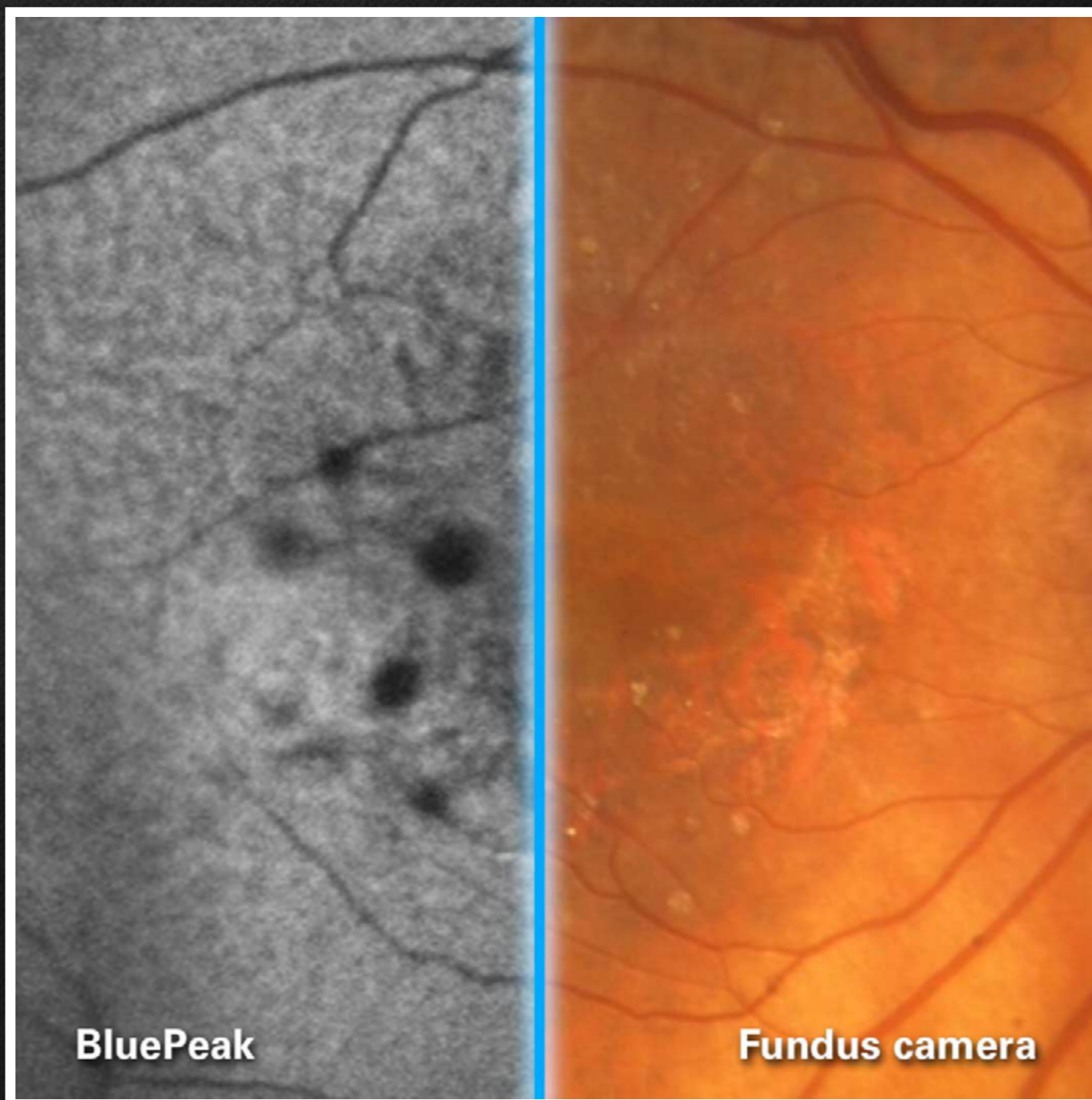
Macular Dystrophy

Videos





BluePeak – Blue Laser Autofluorescence



BluePeak is a non-invasive, scanning laser fundus imaging modality that provides a map of the retina which can reveal metabolic malfunction of diagnostic significance in many conditions such as AMD.

Diagnostic Images

Healthy Subject

Geographic Atrophy

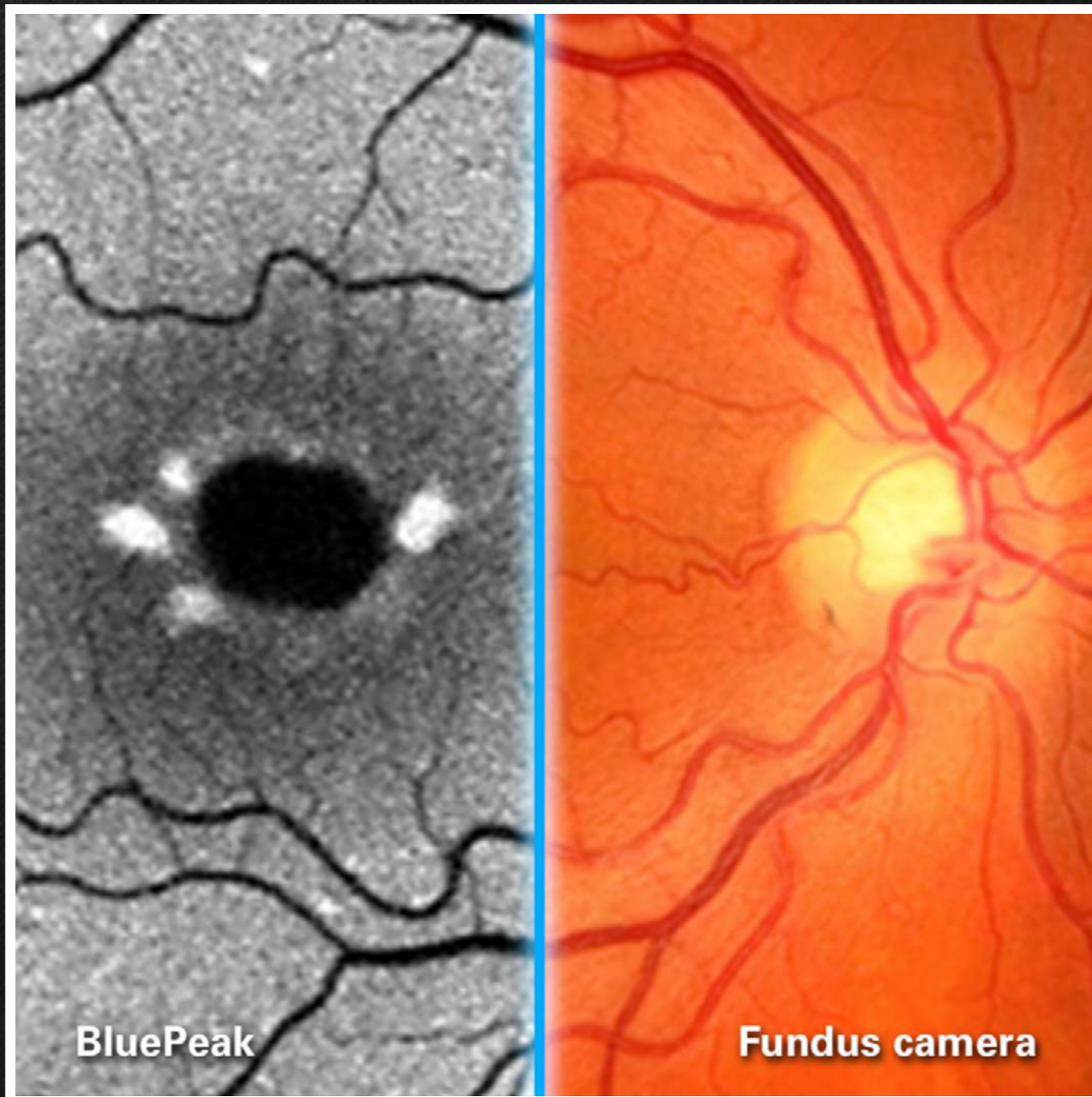
Macular Dystrophy

Videos





BluePeak – Blue Laser Autofluorescence



BluePeak is a non-invasive, scanning laser fundus imaging modality that provides a map of the retina which can reveal metabolic malfunction of diagnostic significance in many conditions such as AMD.

Diagnostic Images

Healthy Subject

Geographic Atrophy

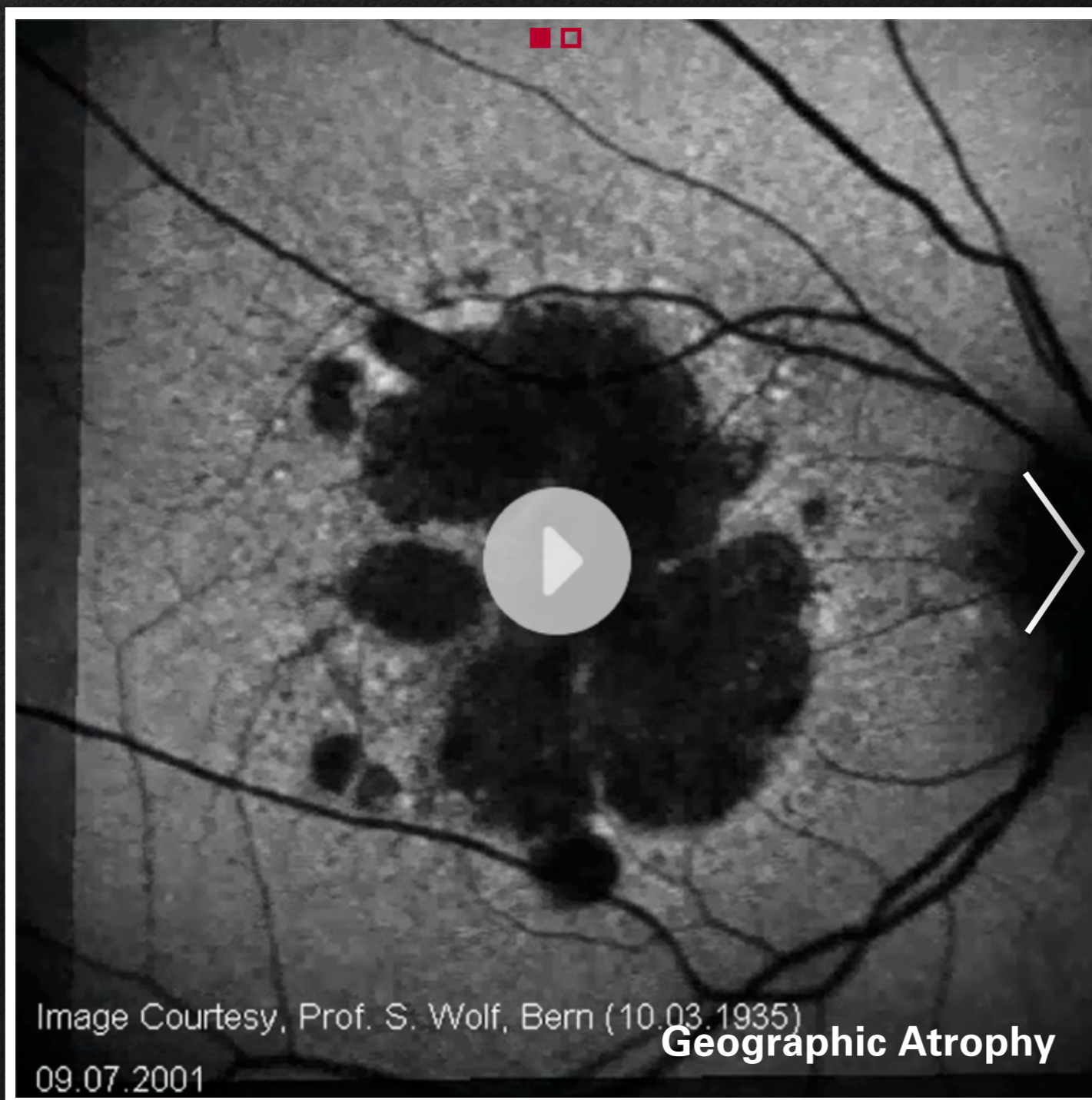
Macular Dystrophy

Videos





BluePeak – Blue Laser Autofluorescence



BluePeak is a non-invasive, scanning laser fundus imaging modality that provides a map of the retina which can reveal metabolic malfunction of diagnostic significance in many conditions such as AMD.

Diagnostic Images

Healthy Subject

Geographic Atrophy

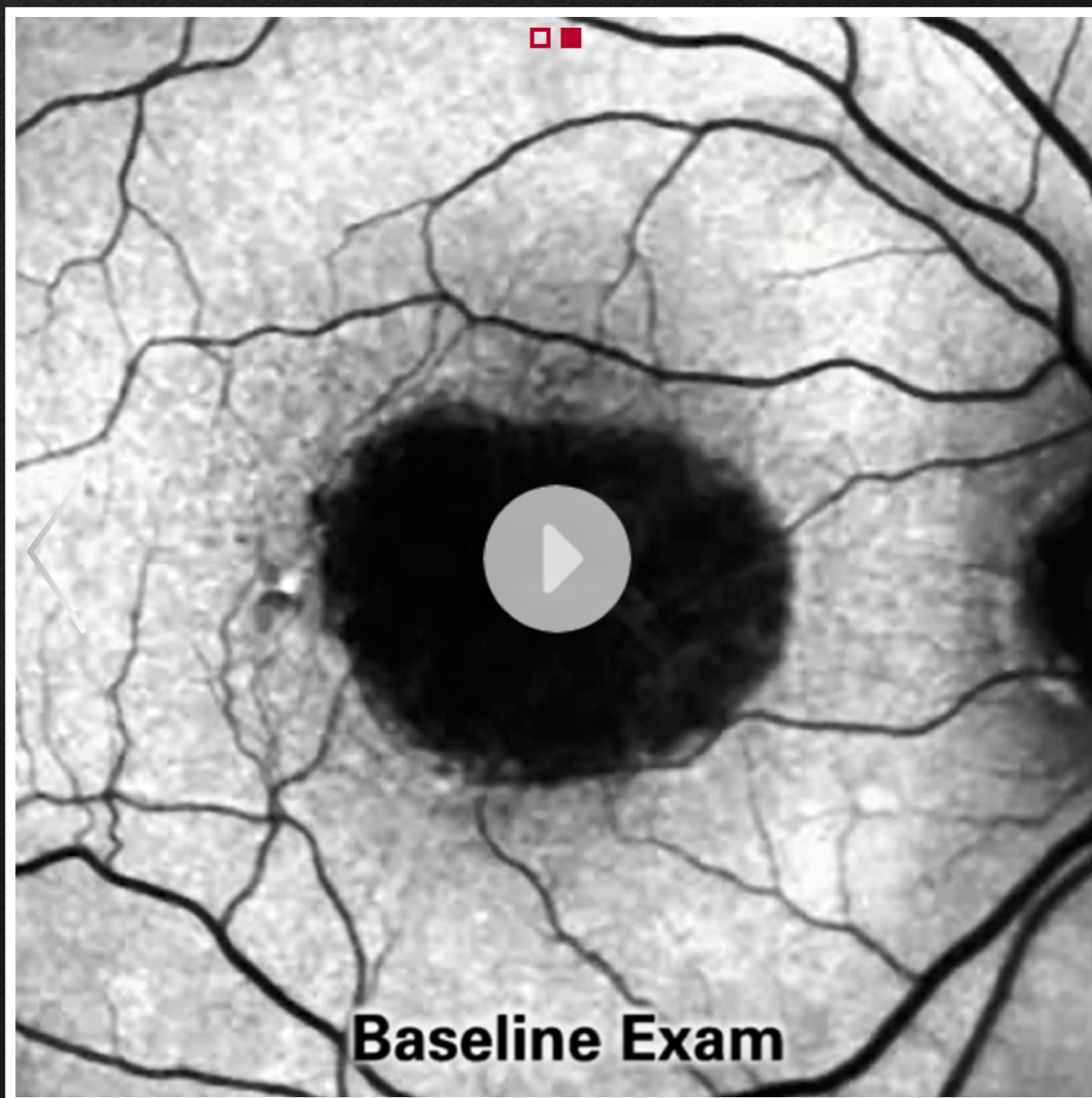
Macular Dystrophy

Videos





BluePeak – Blue Laser Autofluorescence



BluePeak is a non-invasive, scanning laser fundus imaging modality that provides a map of the retina which can reveal metabolic malfunction of diagnostic significance in many conditions such as AMD.

Diagnostic Images

Healthy Subject

Geographic Atrophy

Macular Dystrophy

Videos





BluePeak – Blue Laser Autofluorescence



BluePeak is a non-invasive, scanning laser fundus imaging modality that provides a map of the retina. BluePeak is a non-invasive, scanning laser fundus imaging modality which provides a map of metabolic stress in the retina using lipofuscin as an indicator. The BluePeak maps can reveal RPE and photoreceptor cell malfunctions which offer diagnostic insights into many retinal conditions such as AMD and hereditary diseases. The key to understanding the morphologic alterations associated with functional change lies in a clear depiction of retinal layers by OCT combined with the metabolic mapping of BluePeak autofluorescence. With the RegionFinder software, diseased areas seen in BluePeak images can be quantified and followed over time.

