

The SPECTRALIS® OCT Angiography Module provides the dynamic tools you need to master the application and interpretation of this novel imaging modality. The module offers three dimensional insight into vascular flow with a flexible combination of non-invasive high resolution imaging and a high speed widefield view.

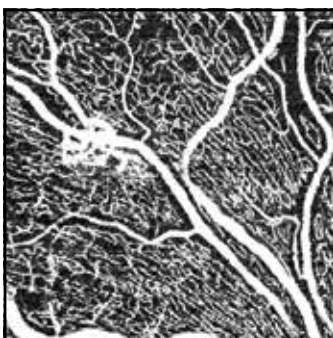
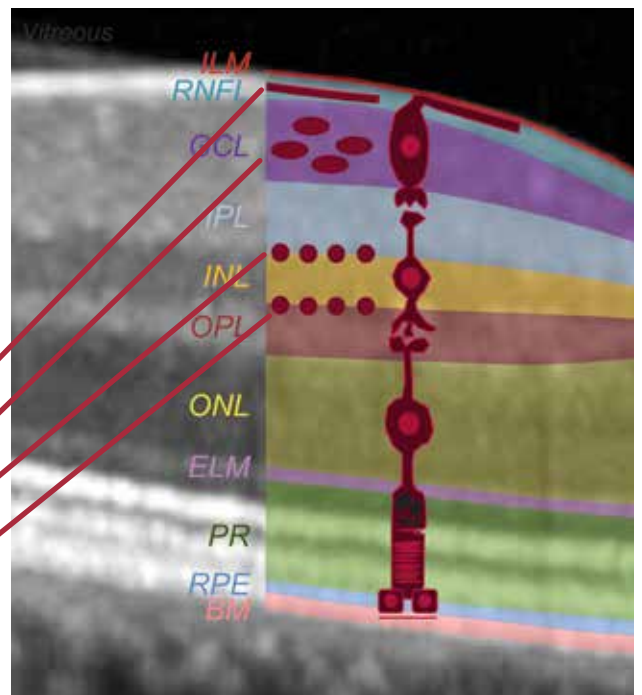
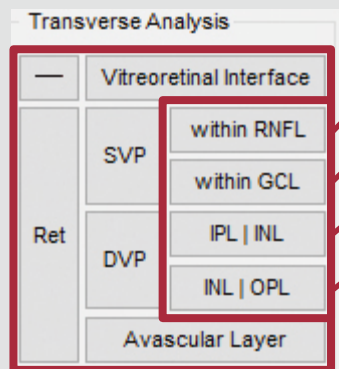
For efficient patient care and optimal clinical assessment, the SPECTRALIS imaging platform combines OCTA with structural OCT and fundus imaging resulting in a powerful multi-modal approach to enhance diagnosis and treatment decisions.

See more detail within 4 retinal vascular plexuses

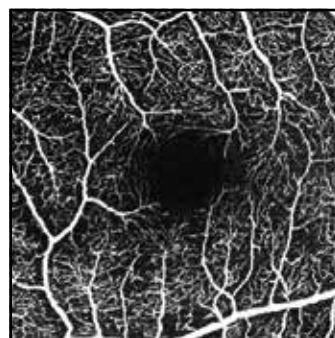
SPECTRALIS delivers high resolution OCTA images with a lateral resolution of 5.7 $\mu\text{m}/\text{pix}$, depicting fine capillary networks in great detail.

The OCT Angiography Module benefits from a 3.9 $\mu\text{m}/\text{pix}$ axial resolution, segmenting out all four histologically-validated retinal vascular plexuses with minimal motion artifacts and no loss of information due to interpolation or artifact suppression.

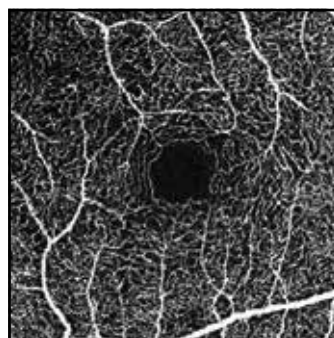
The OCTA Module for SPECTRALIS offers four presets within the superficial and deep vascular plexuses for a more comprehensive and faster clinical evaluation.



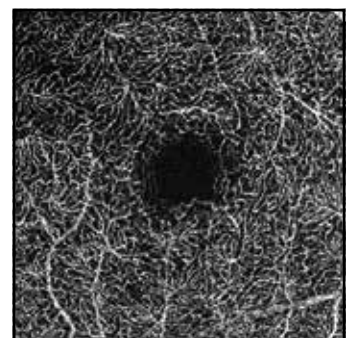
Vasculature within the RNFL



Vasculature within the GCL

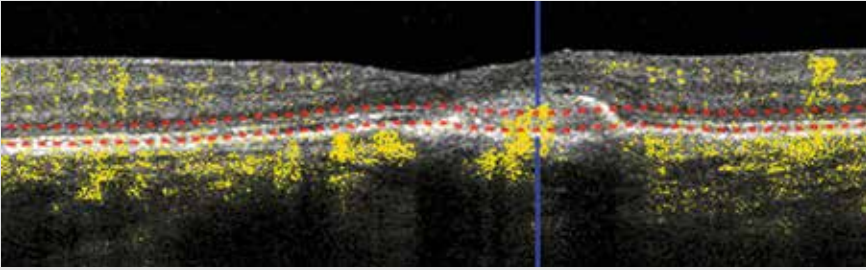


Vasculature at the IPL / INL Border



Vasculature at the INL / OPL Border

Visualize pathology in any retinal layer



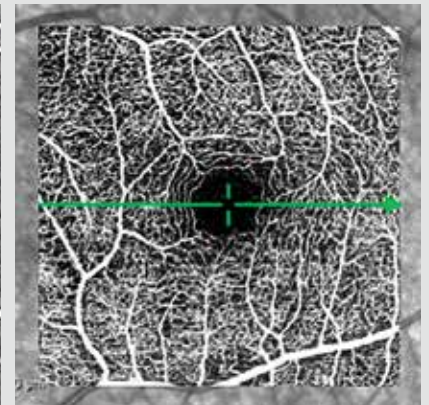
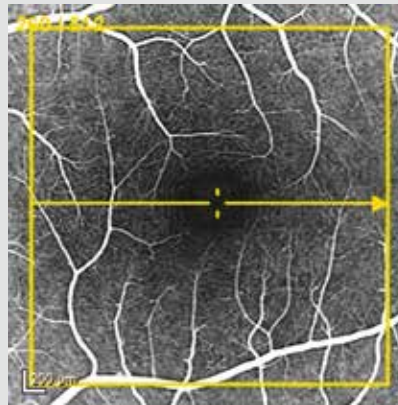
The OCT Angiography Module for SPECTRALIS gives you the flexibility to customize the slab position on every B-scan image, allowing for visualization of pathology in any retinal layer. The dynamic image fusion of OCT and OCTA supports precise localization of flow in abnormal vessels.

Enhance clinical decisions with multi-modal imaging

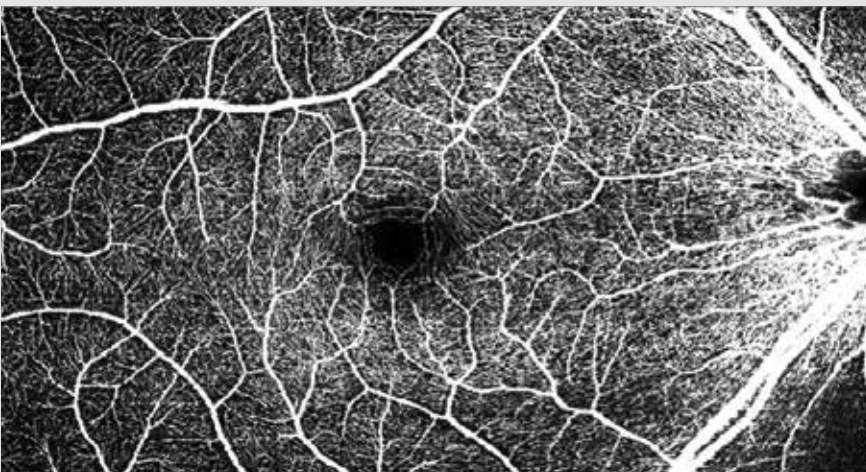
The SPECTRALIS OCT Angiography Module allows you to combine OCTA images with structural OCT and confocal laser scanning fundus imaging modalities in a convenient and seamless manner for a comprehensive clinical evaluation.

The SPECTRALIS multi-modal imaging platform enables a unique hybrid approach to angiography. It allows you to precisely correlate OCTA follow-ups on existing FA and ICGA images to validate clinical assessment and gain the confidence needed to exploit the potential of this new imaging modality.

The precise, pixel-to-pixel correlation of OCTA and fundus images, enabled by TruTrack Active Live Eye Tracking and the Scan Planning Tool, provides three-dimensional insight into complex pathologies.



Experience the flexibility of a wider field of view



The SPECTRALIS OCT Angiography Module allows you to focus on the information that is relevant for individual patient assessment.

Explore vascular details in a high resolution $10^\circ \times 10^\circ$ image or obtain a widefield overview by choosing a high speed scan with up to a 30° horizontal field of view.

With this flexible image resolution and field of view, the OCTA Module allows you to customize how to explore pathologies.

Headquarters
Heidelberg Engineering GmbH
Max-Jarecki-Str. 8
69115 Heidelberg · Germany
Tel. +49 6221 6463-0

AUS
Heidelberg Engineering Pty Ltd
404 Albert St.
East Melbourne 3002 • Victoria
Tel. +61 396 392 125

CH
Heidelberg Engineering GmbH
Alte Winterthurerstrasse 88
8309 Nürens Dorf
Tel.: +41 44 8887 020

UK
Heidelberg Engineering Ltd.
55 Marlowes
Hemel Hempstead
Hertfordshire HP1 1LE
Tel: +44 1442-502 330

**HEIDELBERG
ENGINEERING**
www.HeidelbergEngineering.com